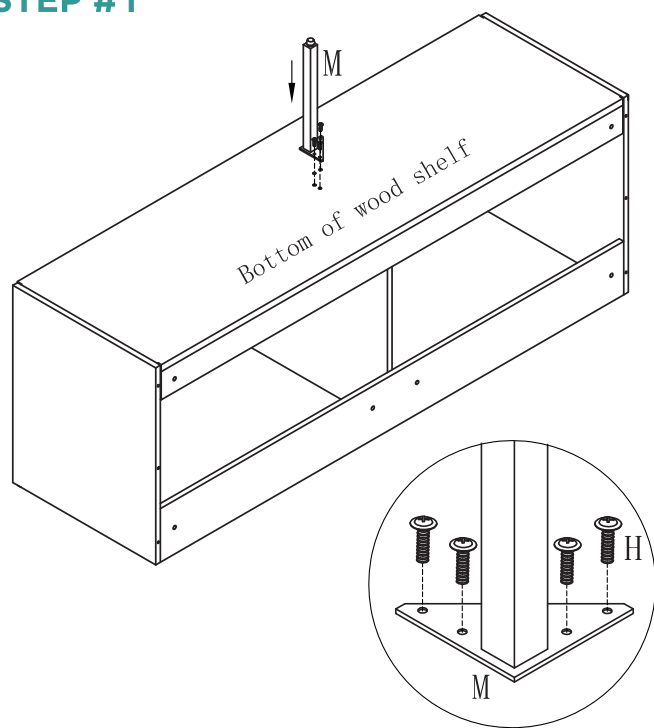


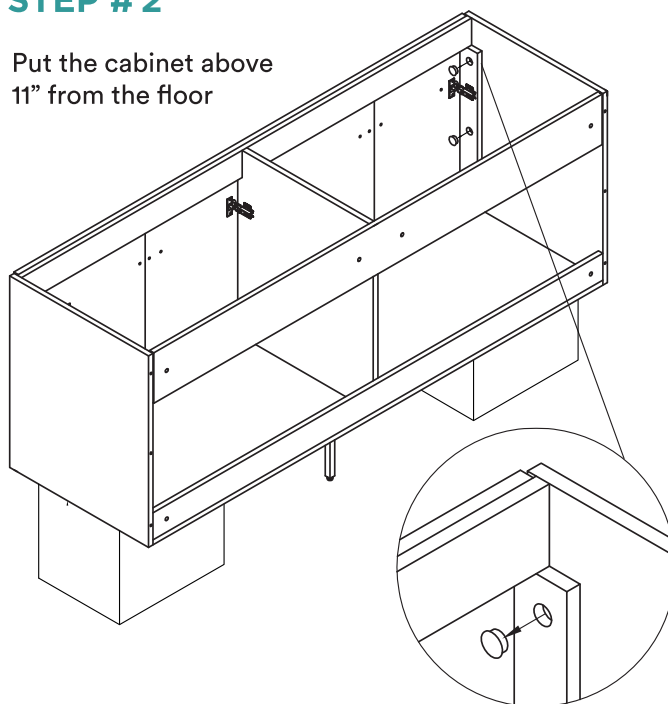
### STEP #1



Put the main cabinet upside down.

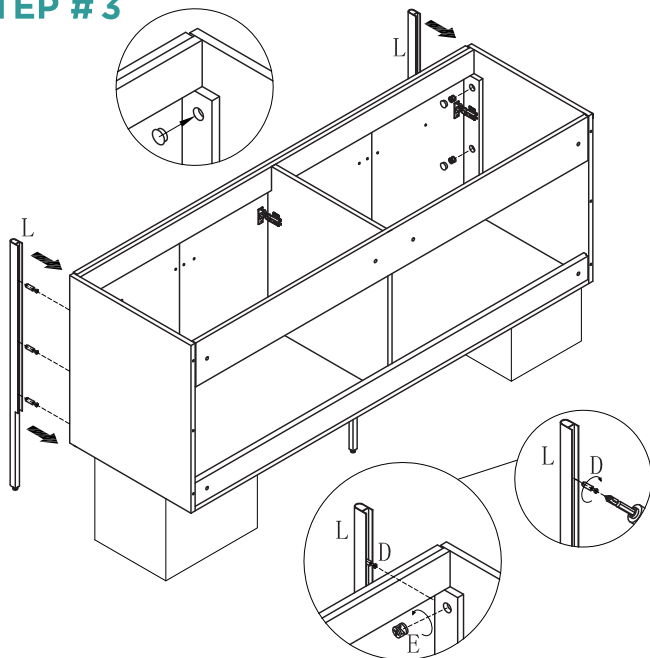
### STEP #2

Put the cabinet above 11" from the floor



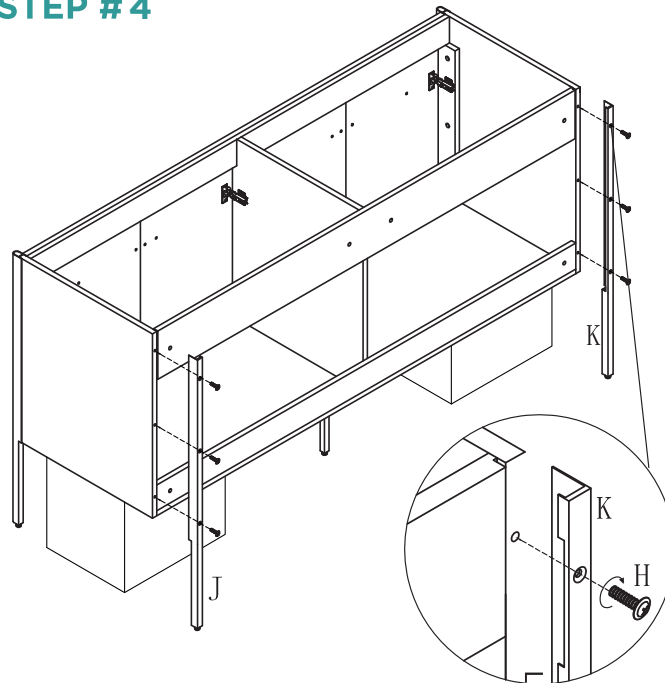
Take off the decorative hole cover from the cabinet.

### STEP #3



Install screw part D on the front legs, Put the legs on the cabinet and screw the cam-lock E tightly, re-cover the decorative hole cover on the panel.

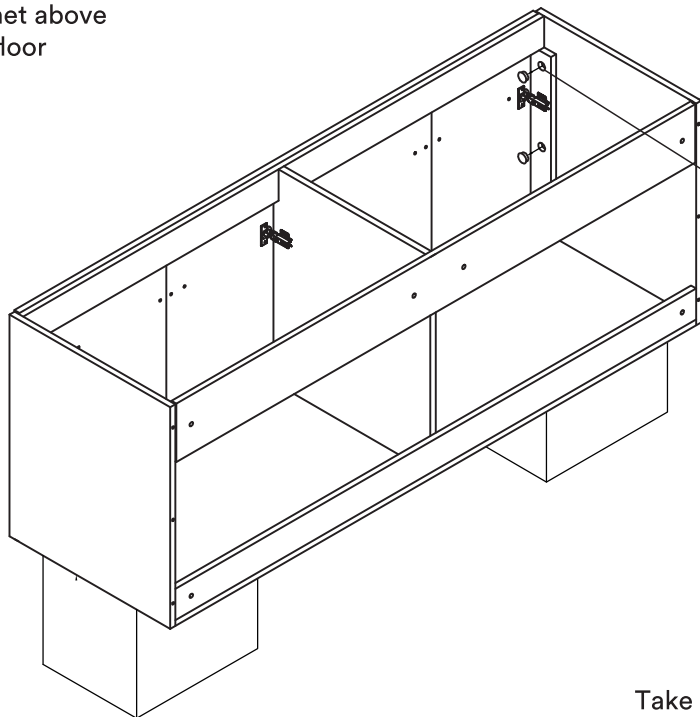
### STEP #4



Put the back legs on the cabinet, and screw part H on the legs.

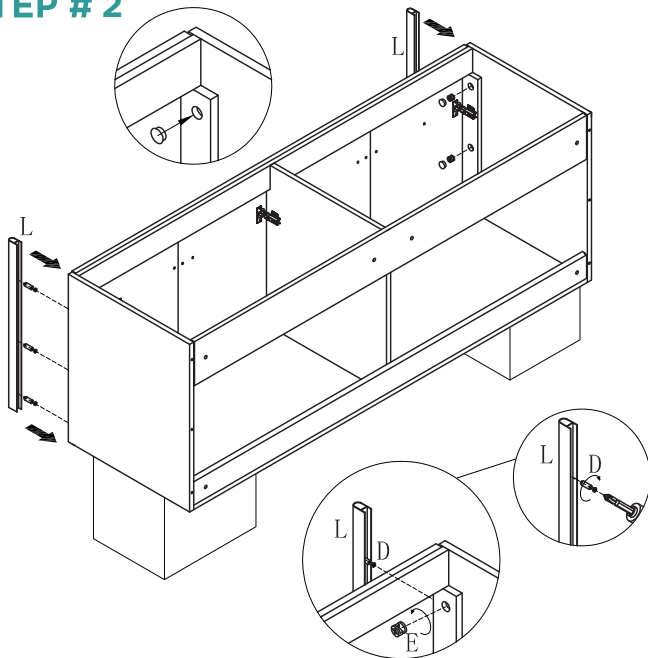
## STEP # 1

Put the cabinet above  
11" from the floor



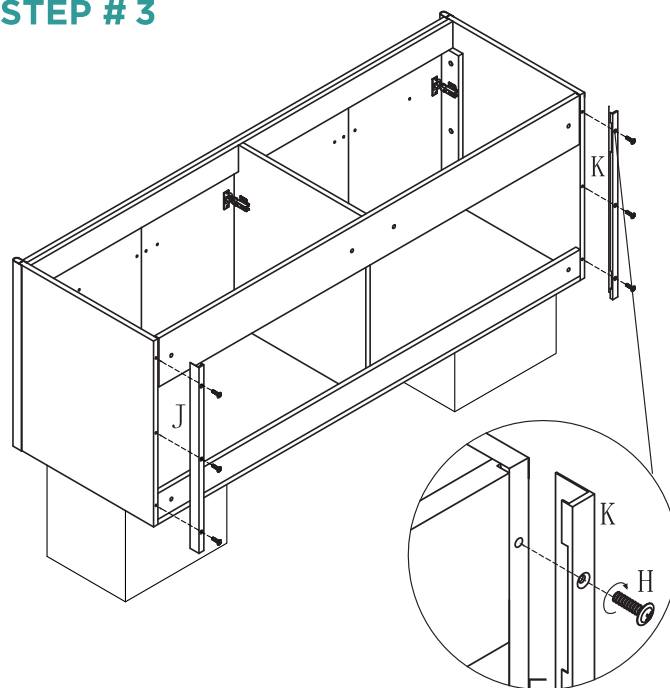
Take off the decorative hole cover from the cabinet.

## STEP # 2



Install screw part D on the front legs, Put the legs on the cabinet and screw the cam-lock E tightly, re-cover the decorative hole cover on the panel.

## STEP # 3



Put the back legs on the cabinet, and screw part H on the legs.